

Titan ADV & Rally Motorcycles

Assembly Manual

AJP PR7 Rally Tower

from 2019+



Version 1.0
20.03.2024

Table of contents

- [Disclaimer](#)
- [The Kit Content](#)
- [Assembly Manual](#)



Disclaimer

The assembly instructions provided in this manual are intended solely for informational purposes. While every effort has been made to ensure the accuracy and completeness of the instructions, it is important to note that the assembly and installation of the Rally Tower for the AJP PR7 motorcycle should only be undertaken by individuals with the necessary mechanical skills, knowledge, and experience.

The assembly process involves handling various components and tools, and improper installation could result in damage to the motorcycle or injury to the assembler. Therefore, we strongly recommend that assembly be carried out by qualified professionals or under the supervision of a trained mechanic.

Furthermore, it is essential to carefully review and adhere to these guidelines and specifications throughout the assembly process. Failure to do so may void warranties and could lead to unsafe operation of the motorcycle.

By proceeding with the assembly of the Rally Tower for the AJP PR7 motorcycle, you acknowledge and accept full responsibility for any risks, damages, or injuries that may occur as a result of the assembly, installation, or use of the product. The manufacturer, distributor, and seller (Titan ADV&Rally Motorcycles GmbH and its partners) of the Rally Tower shall not be held liable for any such incidents.

If you have any questions or concerns regarding the assembly process or the product itself, please consult with a qualified mechanic or contact our customer support team for assistance via **info@titan-adv-rally.com**.



The Kit Content

	LH side panel		Light cover		Navigation tube
	RH side panel		Anti-glare cover		M5 washer x26
	Rear panel		Brake line guide		M5x10 - x4
	Front panel		AMPS block		M5x16 – x2 Rubber rivet x2 M5 nylon washers x2
	LED headlight unit		RH & LH bottom support		Rubber (vibration) damper – x8
			RH & LH top support		M5x16 – x22
	RH & LH fairings		USB power socket		M5 90° washer – x10
			Grommet		M5 Nylock nut x6 cap nut x4
	Windshield		Rubber dampers		M5x16 – x6 M5x20 – x2 M5x30 – x2
			M6x20 x1 Body washer x1		



Assembly Manual

- **STEP 1**

Remove the OEM Tower and the RH side panel (in the driver's direction).

Unplug all cables from the OEM tower, trace back the ignition switch cable under the RH panel and unplug it as well.

The speed sensor cable must be unplugged too (Figure 1).



Figure 1 - Step 1

- **STEP 2**

Disassemble the OEM brake line guide, this part won't be needed anymore (Figure 2.1).

Replace the missing screw with an M6x20 and the M6 Body washer (as seen in the picture) from the bottom of the fender. Add a small amount of medium Loctite (Blue) – (Figure 2.2 and 2.3 page 5).



Figure 2.1 - Step 2

Assembly Manual



Figure 2.2 - Step 2



Figure 2.3 - Step 2

- **STEP 3**

Attach the new brake line guide with two zip ties, but do not tighten them at this point. We will have to align the guide at a later stage (Figure 3).

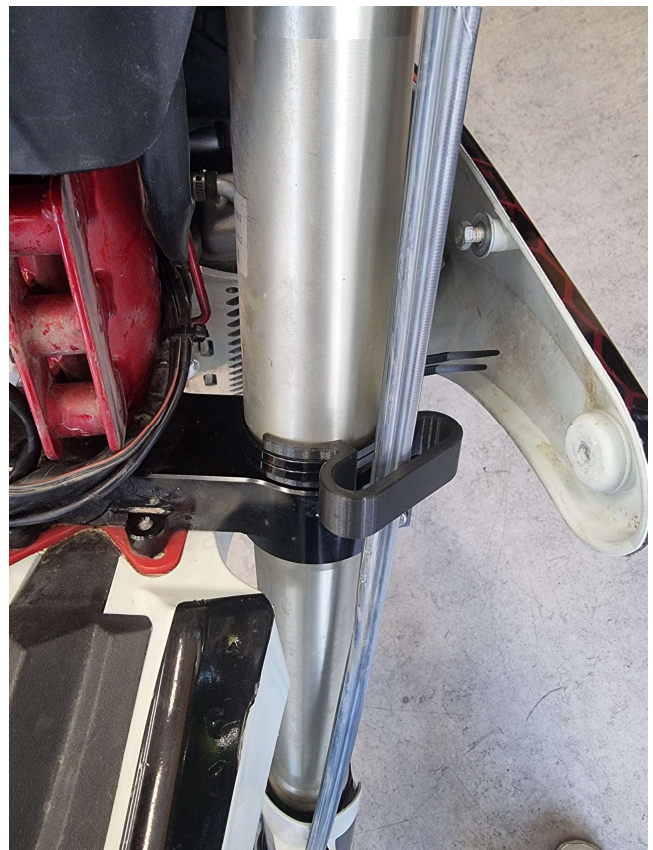


Figure 3 - Step 3

Assembly Manual

- **STEP 4**

Mount in place the LH & RH panels of the new tower with the 3 OEM screws. Use a small amount of medium Loctite (blue).

Attention: Do not tighten the screws fully at this point, mount the panels in a way that you still have some play. This is crucial for later alignment since the tolerances are very tight (Figure 4.1 and 4.2).



Figure 4.1 - Step 4

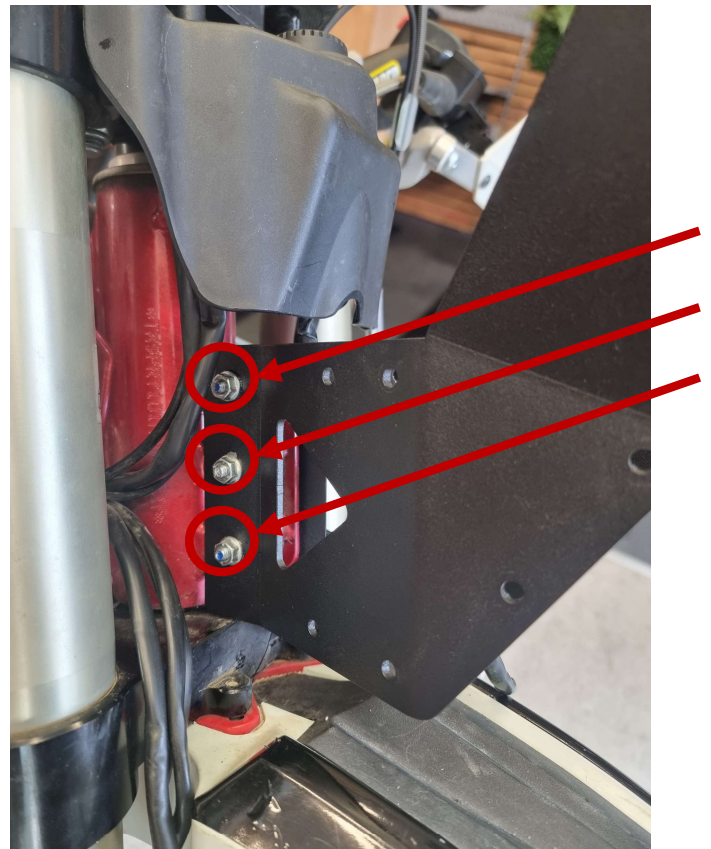


Figure 4.2 - Step 4

Assembly Manual

- **STEP 5**

Route the cables through the side panel openings as seen in the picture (Figure 5).

If you want to use some sort of cable protection sleeve, this would be the moment to add them (not in the kit).

The cable protection sleeves are not mandatory, thus you can route the cables to your liking.

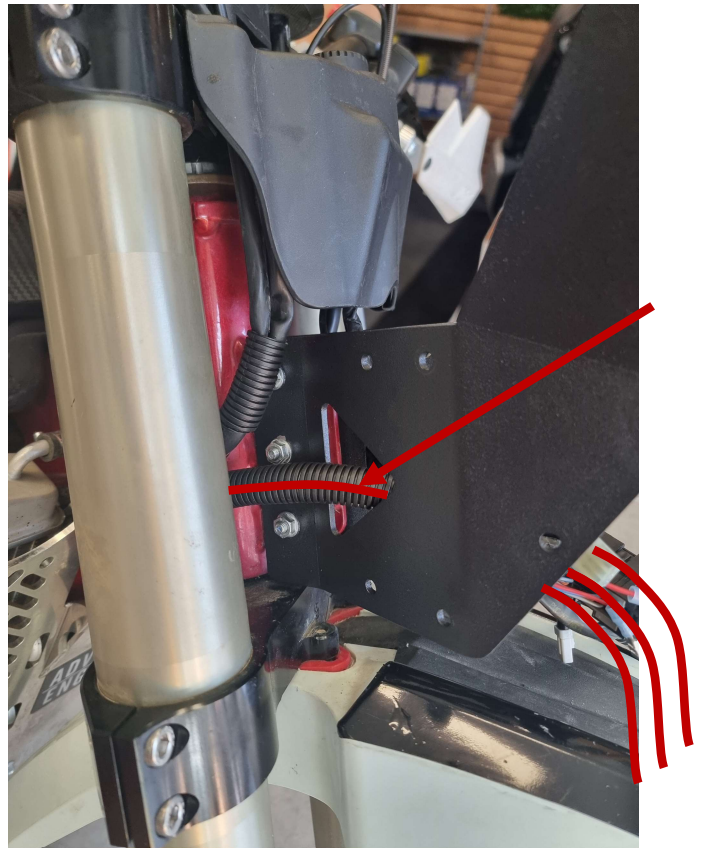


Figure 5 - Step 5

- **STEP 6**

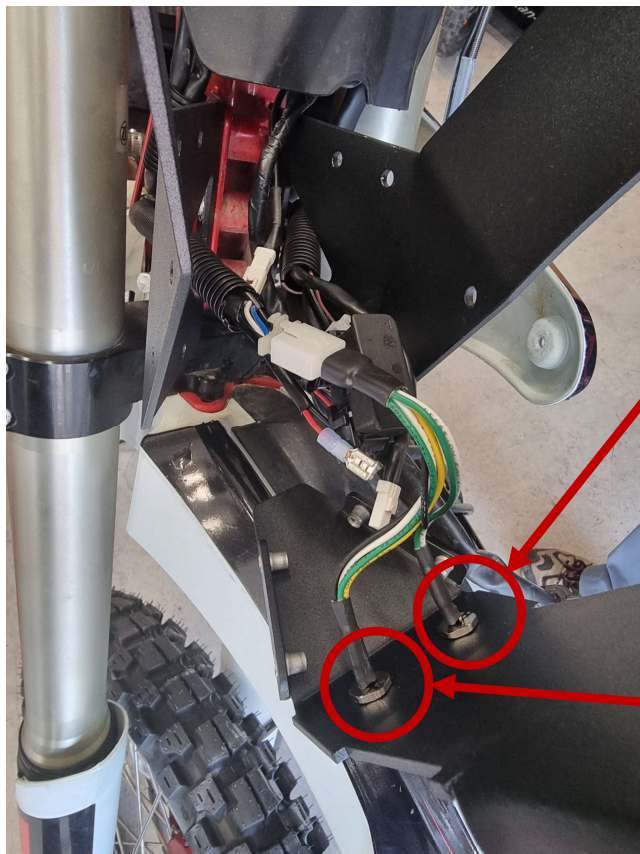
After routing all the cables through the side panels, take the front panel and plug in the LED Light Adaptor cable (Figure 6.1).

There is a low beam and high beam side. The plug with the yellow wire is the low beam and we have it on the RH side (driver's direction) – (Figure 6.2 page 9).



Figure 6.1 - Step 6

Assembly Manual



HIGH BEAM

LOW BEAM

Figure 6.2 - Step 6

• STEP 7

Take the pre-assembled LED headlight unit and guide the lower two rivets to the other side of the front panel (Figures 7.1 and 7.2).

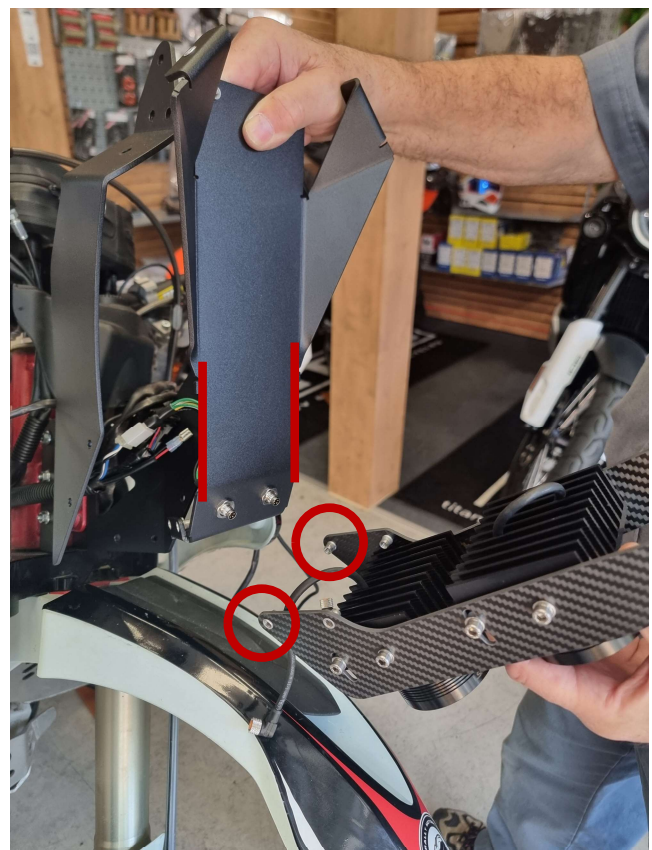


Figure 7.1 - Step 7



Assembly Manual



Figure 7.2 - Step 7

• STEP 8

Now bring the front panel together with the light unit into position and attach the front panel with 4xM5x16 and 4xM5 washers (Figure 8).

Put some medium Loctite (blue) on the screws but do not fully tighten them at this point.

You can leave the light unit folded down while doing so. Please do not push or apply any force to the hanging light unit.



Figure 8 - Step 8

Assembly Manual

- **STEP 9**

Now move the LED light unit into an upright position and mount in position the 4 M5 vibration dampers with medium Loctite (blue) (Figures 9.1 and 9.2).

Tighten them as well as you can by hand, do not use pliers or you might damage the rubber.



Figure 9.1 - Step 9

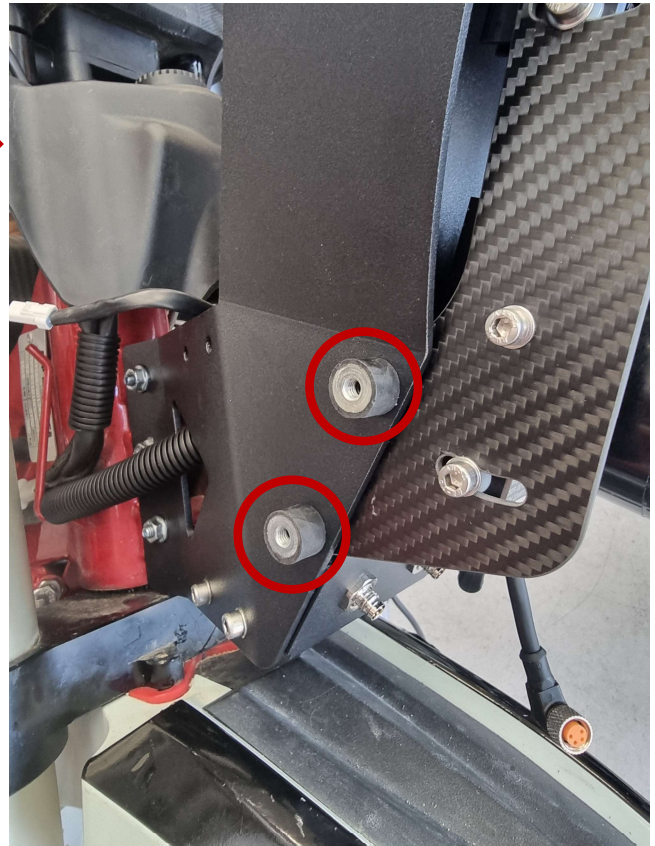


Figure 9.2 - Step 9

Assembly Manual

- **STEP 10**

Now you can plug in the two LED Headlights.

RH => Low beam (Bottom LED unit)

LH => High beam (Top LED unit)

Both are seen in the driver's direction (Figure 10).

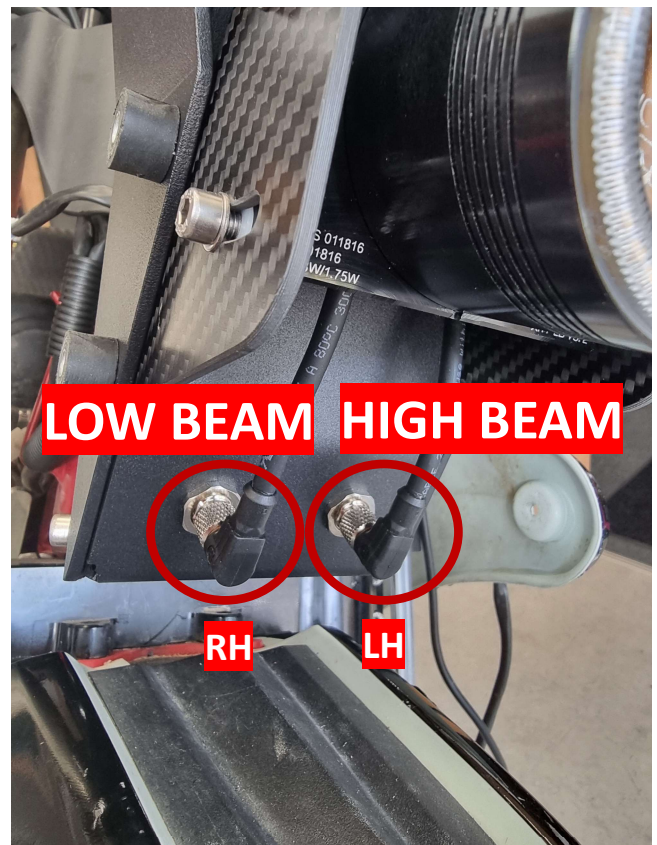


Figure 10 - Step 10

- **STEP 11**

Take the front panel and assemble the Speedo unit with the OEM screws and the OEM rubber grommets (Figure 11.1).

Mount the USB Power outlet, align it and tighten the nut (Figure 11.3 page 13).

Mount the rubber grommet with the membrane as seen in the picture. This will be your cable/wire in-outlet for your hard-wired roadbook or navigation device (Figure 11.2 page 13).



Figure 11.1 - Step 11

Assembly Manual



Figure 11.2 - Step 11



Figure 11.3 - Step 11

• STEP 12

Take the rubber grommet with the through hole and slide it over the speedo and speed sensor cable (Figure 12).



Figure 12 - Step 12

Assembly Manual

- **STEP 13**

Guide the speedo and speed sensor cable through the front hole behind the USB power outlet and mount the rubber into position (Figure 13).



Figure 13 - Step 13

- **STEP 14**

Plug in the USB Power outlet with the two + - wires from the OEM USB power outlet (located behind the tablet) (Figure 14.1).

Plug in the Speedo cable (Figure 14.3 page 15). Plug in the speed-sensor cable (Figure 14.2 page 15).

Guide the speedo cable on the RH side out of the tower and plug it back in, then re-assemble the RH plastic fairing (Figure 14.5 page 15).

Ensure all wires have been plugged in, and are nicely distributed inside the tower. You can arrange them to your liking (Figure 14.4 page 15).



Figure 14.1 - Step 14

Assembly Manual



Figure 14.2 - Step 14



Figure 14.3 - Step 14



Figure 14.4 - Step 14



Figure 14.5 - Step 14



Assembly Manual

- **STEP 15**

Bring the rear panel into position between the two side panels LH & RH.

Mount the rear panel with 6x M5x16 and M5 washers at the bottom where the USB power outlet is located and at the top above the speedo unit (Figures 15.1 and 15.2).

Now mount the two M5x16 and M5 washers on the top at the side of the LH & RH panels (Figure 15.3).

Apply medium Loctite (blue) on all of the screws. Do not fully tighten them



Figure 15.1 - Step 15



Figure 15.2 - Step 15



Figure 15.3 - Step 15



Assembly Manual

- **STEP 16**

Now assemble the carbon navigation tube with the two black anodized end caps and two M5x20 inner hex screws (Figure 16).

Apply medium Loctite (blue) align the tube nicely and fully tighten the screws.

Please be careful to not overtighten the screws, the applied Loctite will make sure that these screws won't get loose.

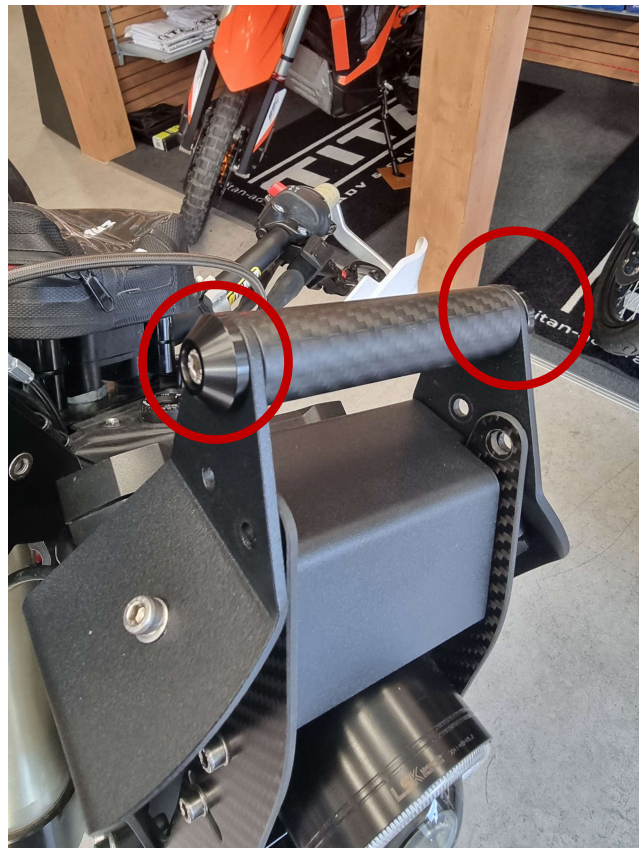


Figure 16 - Step 16

- **STEP 17**

Now mount the top 4 vibration dampers with 4x M5 cap nuts and 4x M5 washers (Figures 17.1 and 17.2 page 18).

Apply medium Loctite (blue) and tighten the dampers fully.

Please be careful to not overtighten the dampers. Make sure the outside threads of the dampers are aligned horizontally.

You can now attach the 22mm AMPS navigation support if wanted.



Figure 17.1 - Step 17

Assembly Manual



Figure 17.2 - Step 17

- **STEP 18**

At this point go around the tower and tighten down all screws. Don't worry about the before-applied Loctite, it won't settle that fast.

Make sure all panels are aligned properly and all gaps are even and snug, you can push and pull on the panels to get the proper alignment if needed.

Assembly Manual

- **STEP 19**

Now we mount the top two anti-vibration windshield support arms. Use 4x M5x8 and M5 washers to do so (Figures 19.1 and 19.2).

Push in the two rubber bushings (Figure 19.1), these will later push against the windshield to avoid top vibration of the windshield.

These parts are optional and not crucial for the functionality of the tower, you can either mount them or not. Also, if you have concerns about the rubber grommets only pushing against the windshield for support, you can exchange them with rubberized threaded rivets, carefully drill a hole through the windshield and mount the supports more permanently.

This is up to the end-user to decide what is preferred.

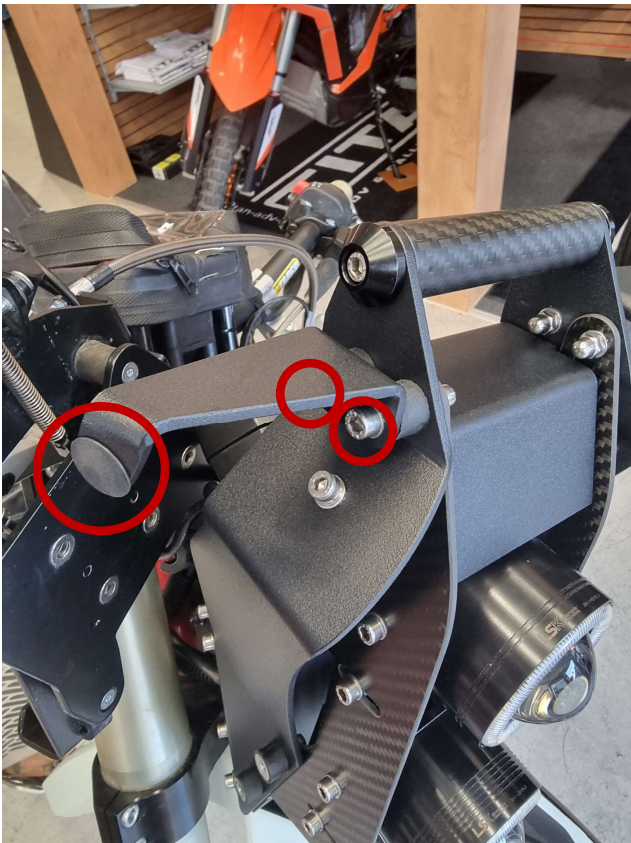


Figure 19.1 - Step 19



Figure 19.2 - Step 19

Assembly Manual

- **STEP 20**

Now we mount the two bottom windshield supports with 4x M5x16 inner hex screws (Figures 20.1 and 20.2).

Apply medium Loctite (blue) and tighten the supports carefully into place.



Figure 20.1 - Step 20



Figure 20.2 - Step 20

Assembly Manual

- **STEP 21**

Mount the two new plastic fairings at the OEM mounting position with the OEM screws (Figure 21).

Tighten the screws carefully.



Figure 21 - Step 21

- **STEP 22**

At this point, we are ready to assemble the windshield.

The top 3 screws are M5x16 with 90° washers on the outside and M5 nylock nuts with M5 washers on the inside.

The 4th screw from the top is a M5x30 with a 90° washer.

The bottom screw is an M5x20 with a 90° washer (order of the screws as in the figure 22).



Figure 22 - Step 22

Assembly Manual

- **STEP 23**

Mount the anti-glare cover on the windshield.

Use the 2 threaded rubber rivets, and push them first through the anti-glare cover and then through the windshield (Figure 23).

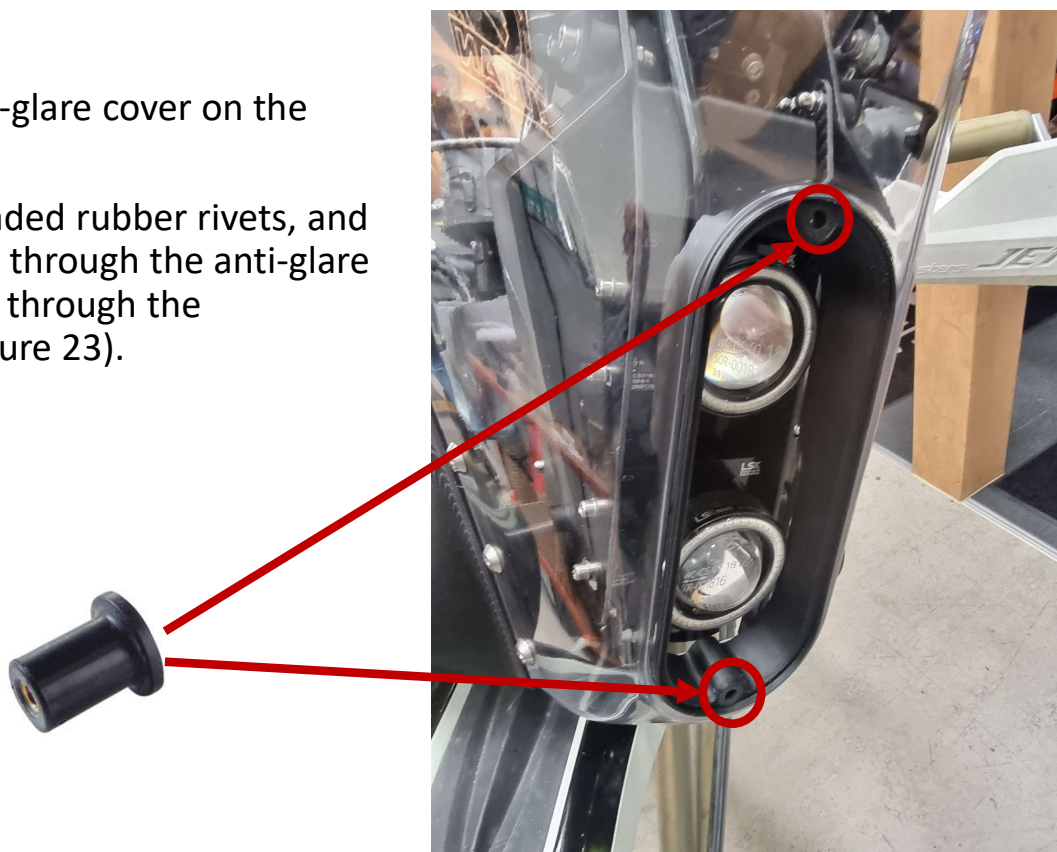


Figure 23 - Step 23

- **STEP 24**

Now mount the headlight cover with 2 M5x16 pan head screws and two Nylon washers (Figure 24).

Make sure the cover sits nicely inside the anti-glare cover.

As a very last step, you have to turn the handlebar all the way to the left and tighten the zip-ties for the new brake line guide as assembled in **step 3**. Align it so it doesn't hit the side of the tower.



Figure 24 - Step 24

Thank you!

Thank you for purchasing the Rally Tower for AJP PR7. If any clarifications are needed, contact us via email info@titan-adv-rally.com.

For more parts visit our home page titan-adv-rally.com.

Follow us on social media.



@titan.adv.rally



[Titan ADV & Rally Motorcycles](https://www.facebook.com/titanadvrally/)

<https://www.facebook.com/titanadvrally/>

Enjoy your ride and FEEL THE ADVENTURE!

